



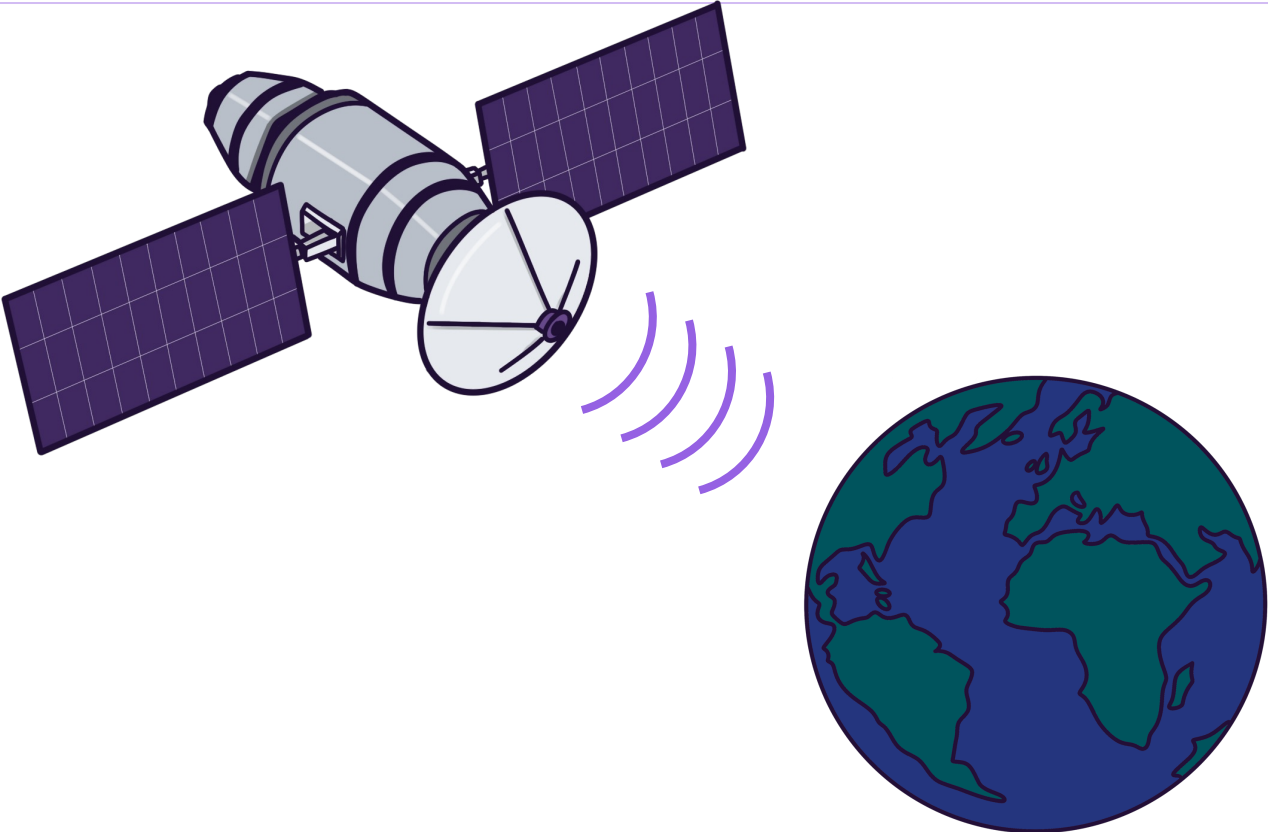
## Data and Metadata

Fundamentals of Scientific Metadata: Why Context Matters

What is Data?



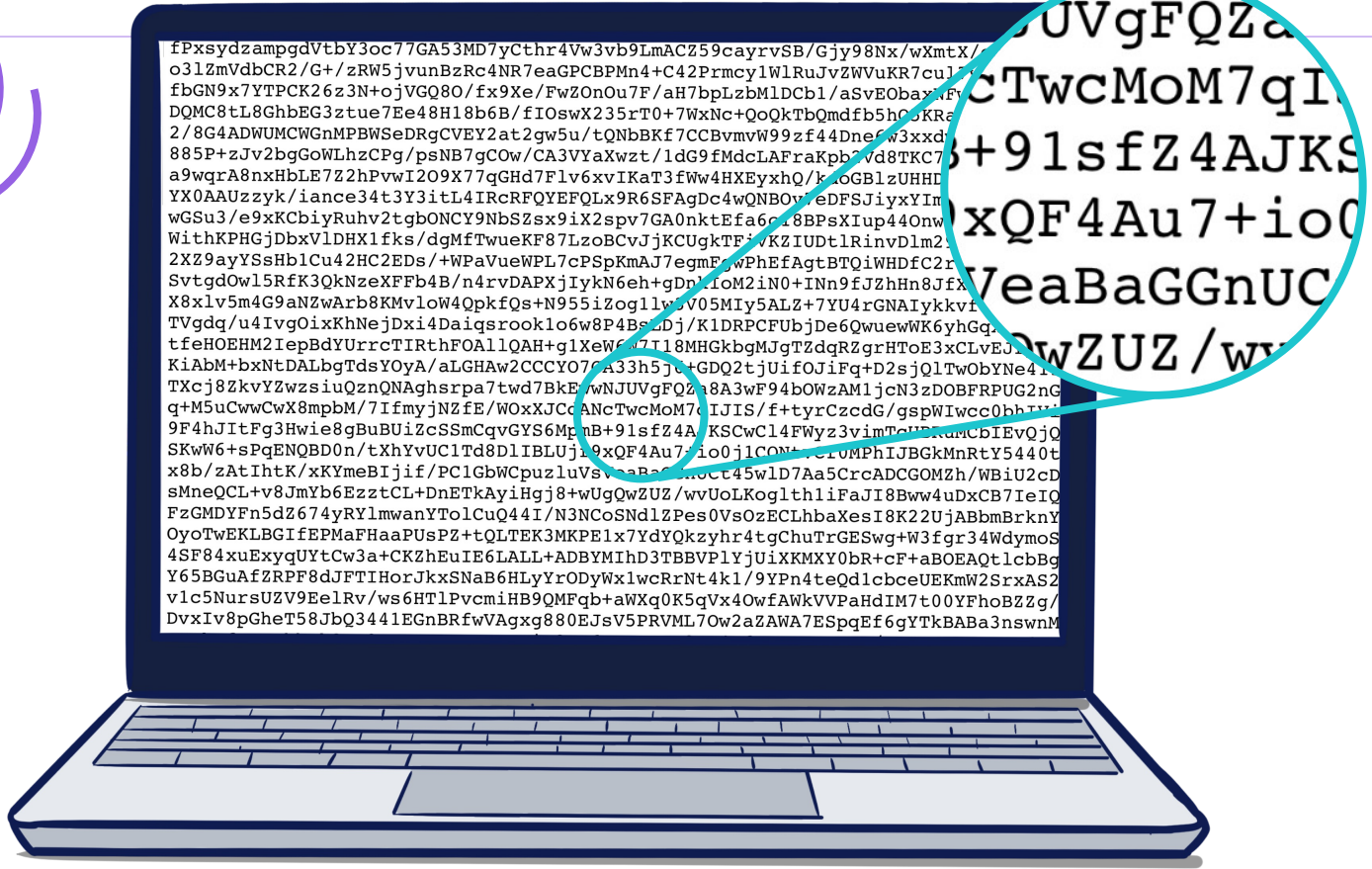
# What is data?



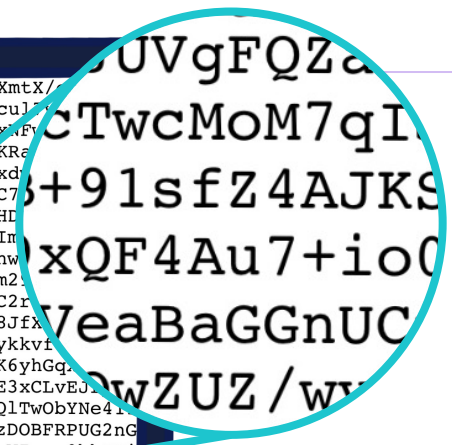
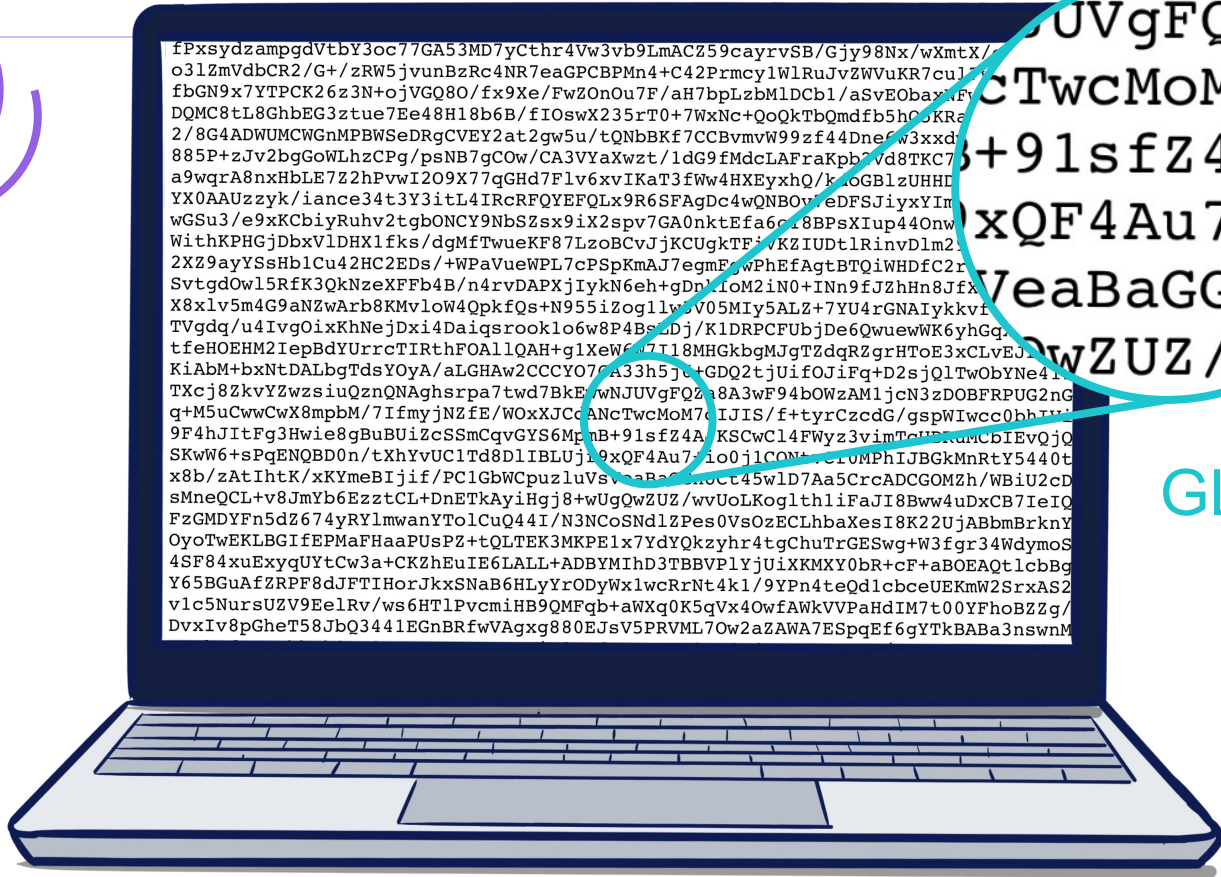
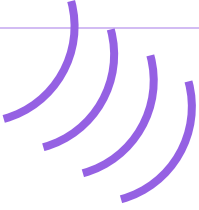
# This is data



# This is data



This is data



GLYPHS

This is data



# Information – the human interpretation

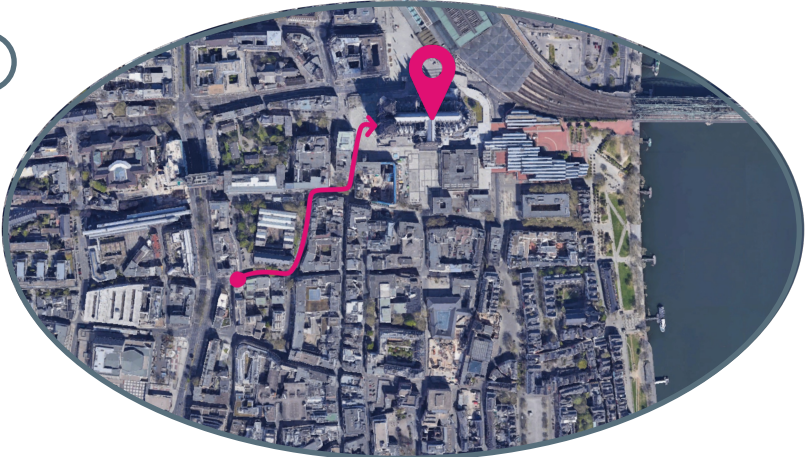




# Information – the human interpretation



# Information – the human interpretation

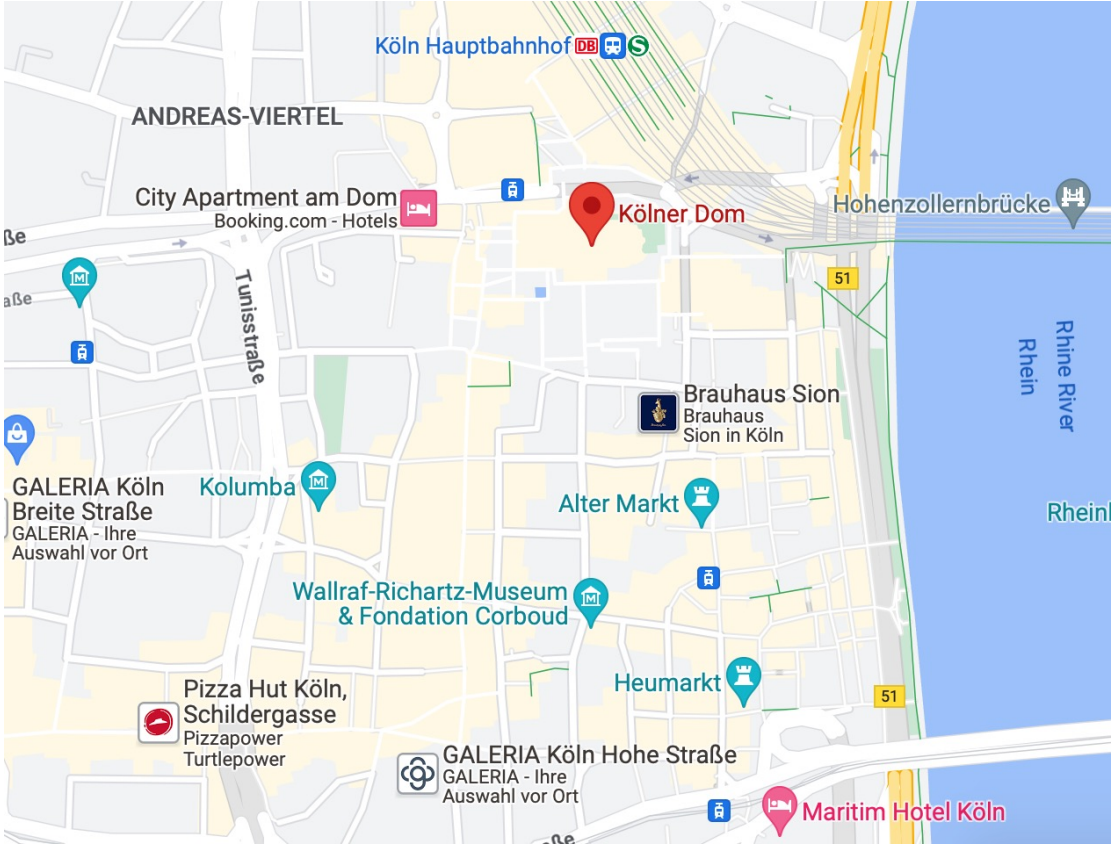


# Knowledge – Intrinsic information

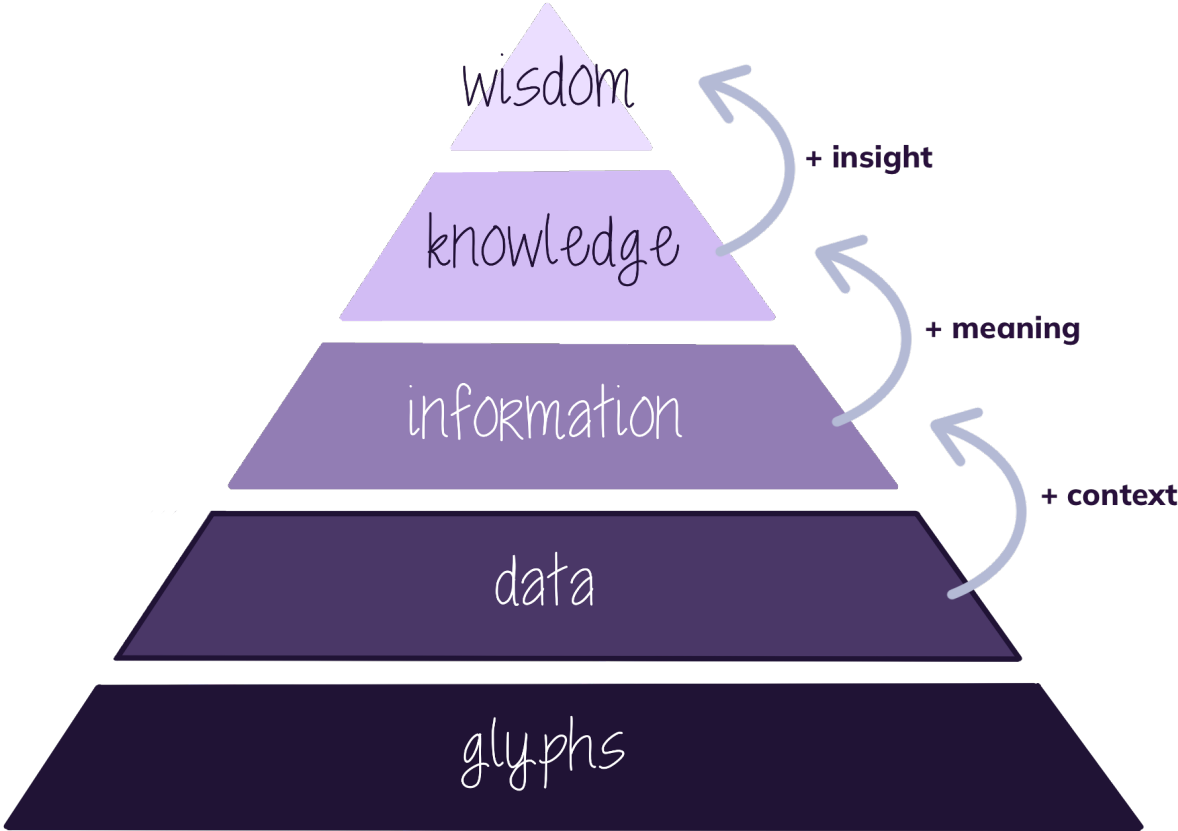


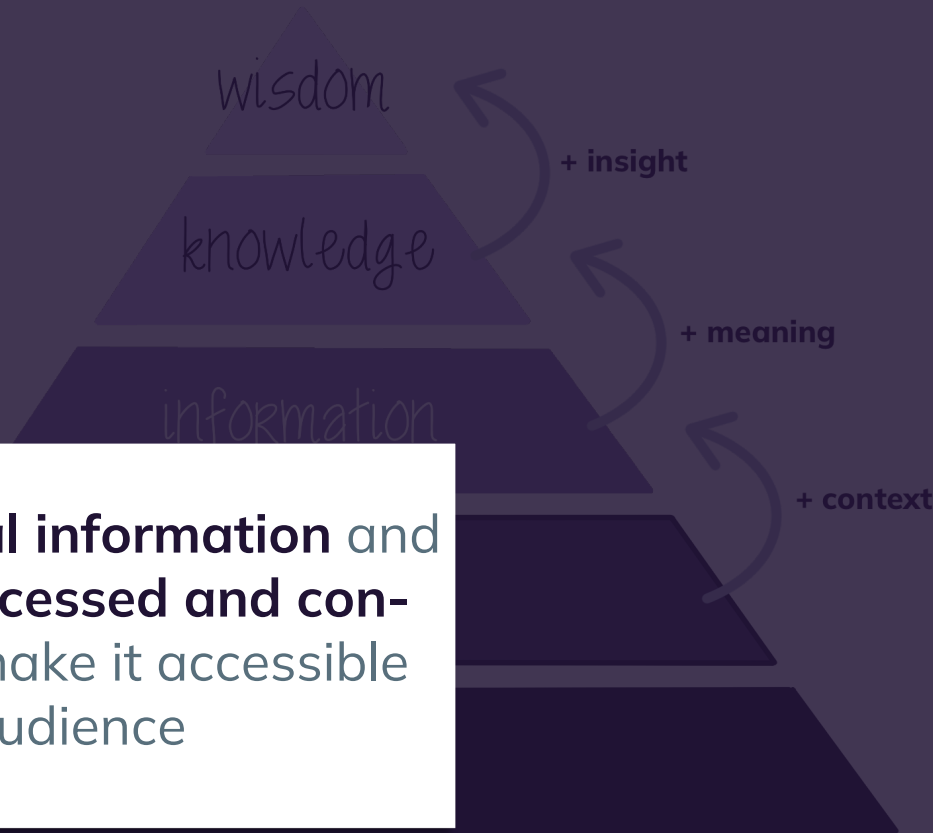
image: Google Streetview

# Wisdom – The bigger picture



# Information pyramid





Data is **potential information** and needs to be **processed and contextualized** to make it accessible for the human audience

# DISCLAIMER

This slide deck is part of the Lesson

**Fundamentals of Scientific Metadata:  
Why Context Matters**

published on **The Carpentries Incubator**.

**Please cite this presentation as:**

Gerlich, S., Strupp, A., Hofmann, V., Sandfeld, S. (2023).  
*Fundamentals of Scientific Metadata: Why Context Matters*.  
The Carpentries Incubator. DOI: [10.5281/zenodo.10091708](https://doi.org/10.5281/zenodo.10091708)

You can find more information about this course on **Github**.



image:  
[https://c.pxhere.com/photos/35/f5/coffee\\_notebook\\_wooden\\_backgroud\\_orange\\_work\\_table\\_office-1222115.jpg](https://c.pxhere.com/photos/35/f5/coffee_notebook_wooden_backgroud_orange_work_table_office-1222115.jpg)